

Competitive Youth Workers in support of young, vulnerable people

22-30 November 2021
Motycz Leśny, Poland

INFOPACK



Erasmus+

ABOUT THE PROJECT

Developing the professional dimension of youth workers, in the context of a European cooperation partnership between Romania and Poland. There will be used non-formal and informal education tools, tools to support the activities that the youth workers carry out with the disadvantaged young people, with the role of promoting European values and acquiring specific competences, in order to prevent the marginalization of young people at risk. The quality of this project arises from the mobility that will be implemented among the youth workers from the partner countries, an opportunity granted to the youth workers within the Social Assistance Directorate to visit a country with more experience in addressing the social problems of disadvantaged young people.



ABOUT THE PROJECT

The project supports the development of the participants in personal and educational level, as well as learning about the issues in the host country, presenting the problems existing locally, with a view to a qualified intervention, to realize the exchange of good practices between the two groups of workers, to travel in intercultural spaces different from their own space in which they live, in order to know new customs and traditions.

WHEN AND WHERE?

22-30 of November 2021
Motycz Leśny, Poland



Participants' profile

Age restriction: 18+

Language proficiency: at least intermediate English

Motivation: you need to actively take part in the course

Covid-19 vaccination: it is obligatory in order to take part in this project.

Participants with fewer opportunities:

This project involves young people that face situations which make participation more difficult to them. These are: cultural differences, economic obstacles, geographical obstacles, social obstacles.

PLEASE KEEP THE BALANCE BETWEEN MALE AND FEMALE PARTICIPANTS



www.greenelephant-foundation.com/



Find us on
Facebook

facebook.com/FundacjaZielonySlon

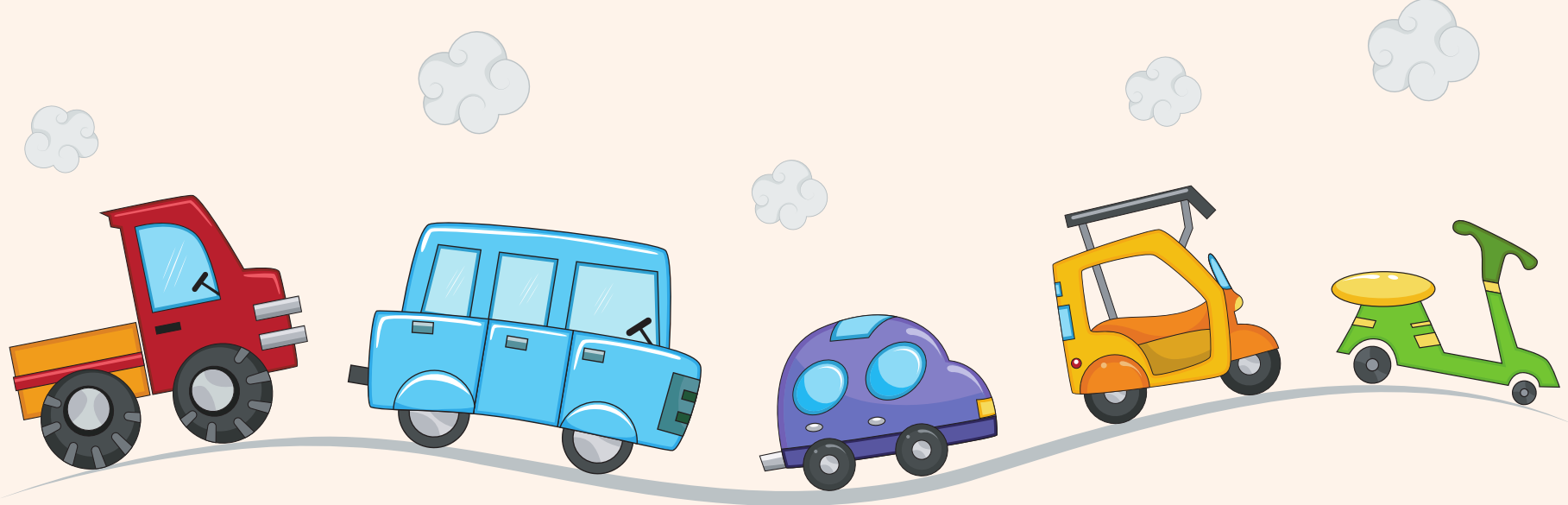


Instagram

instagram.com/green_elephant_foundation/

LEADING ORGANISATION





TRAVEL INFO

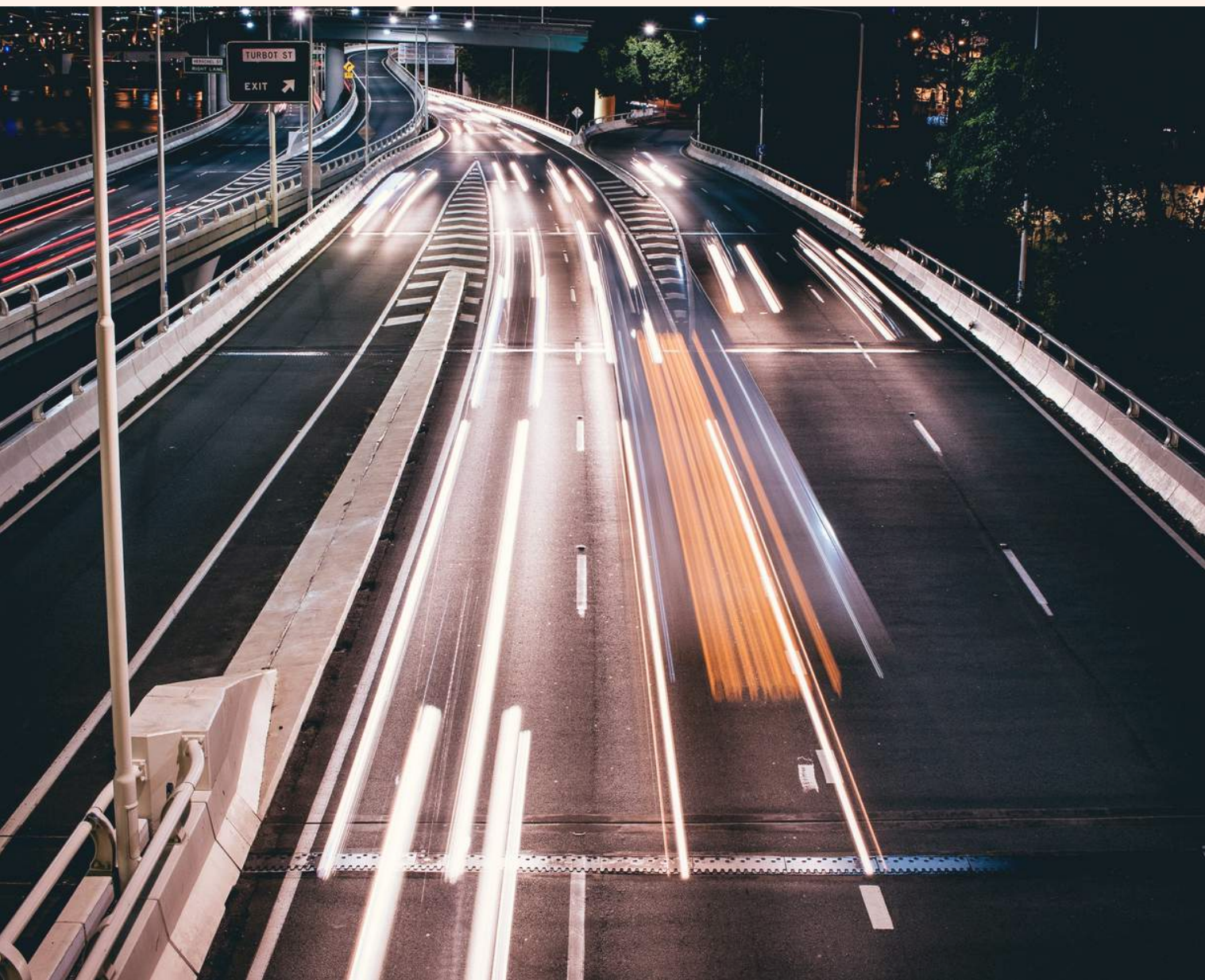
Good news: 100% OF ACCOMMODATION, FOOD AND TRANSPORTATION DURING THE TRAINING COURSE ARE COVERED BY THE ERASMUS+ PROGRAM.

DO NOT LOSE YOUR TRAVEL DOCUMENTS!

In order to receive a reimbursement you MUST have all the original tickets, invoices and boarding passes.

We reserve the right to refuse reimbursement to a participant who has not participated actively in 80% of the classes.

TRANSPORT DETAILS



- Before you buy tickets, all travel options MUST be consulted with your sending organisation in order to inform us about your plans.

Let us take care!

- Green Elephant Foundation is able to hire a bus if most of participants would need it. Participants can also come by cars directly to Motycz. We can hire a bus from Warsaw or Lublin. Motycz itself is located just 10 km from Lublin. If only small group would need help in a transport we will find you the best public bus and train connections in order to get to

Motycz.

- Important! If from Warsaw, do not book your flights back for an early morning. Motycz is not „right behind the corner” of Warsaw – it takes approximately 2.5 hours to get there. That’s why it is problematic while your flight takes off at 6 or 7 a.m.

If you will be going home from Lublin we will arrange taxi or call Uber.



WHERE WILL WE STAY?



Our venue is called „Centrum Dobrego Wychowania”.

You can successfully google it. Unfortunately, only Polish language version is available.

- Rooms are for 3, 4 persons.
- You need to take our own towel & shampoo/shower gel.
- In each room there's a bathroom and Wi-Fi.
- Please inform us in the e-form about your food preferences. We need to know in advance if you're a vegan, lactose-intolerant, etc.
- We do not provide an equipment such as washing-machine, hairdryers etc.
- There's a possibility to rent an iron, towel, blanket (one-time charge 5 euro). While renting things there's also an obligatory 10 euro of returnable deposit (10 euro goes back to you when towel, blanket or iron goes back to us).



More photos of our venue:
<https://cdw.edu.pl/galeria/>

CURRENCY USED IN POLAND IS **PLN** (POLISH ZŁOTY). PLEASE, MAKE SURE YOU EXCHANGE YOUR CASH BEFORE THE FLIGHT OR IN THE CITY OF ARRIVAL (AT THE AIRPORT FOR EXAMPLE).



THERE'S USUALLY COLD IN POLAND IN NOVEMBER. NORMALLY TEMPERATURE IS AROUND 5-10° C, BUT CAN BE RAINY, SO BE PREPARED ;) WE STRONGLY RECOMMEND CHECKING THE FORECAST BEFORE COMING OR TO WRITE THE COORDINATORS TO CONSULT.



Erasmus+

COVID-19 ISSUES



DUE TO THE DURATION OF THE COVID-19 OUTBREAK, ALL SAFETY MEASURES WILL BE MAINTAINED DURING THE EVENT IN ACCORDANCE WITH GOVERNMENT REGULATIONS.

THE ORGANIZERS WILL ADAPT TO THE SANITARY AND EPIDEMIOLOGICAL REQUIREMENTS IN THE CASE OF FURTHER SITUATION'S DEVELOPMENT.

DURING THE EVENT, PARTICIPANTS WILL BE OBLIGED TO OBEY ALL THE RULES OF HYGIENE AND SAFETY.

GET TO KNOW OUR TEAM AND DON'T HESITATE TO ASK FOR MORE INFORMATION!



ADAM RĘBACZ

President



+48792573548



zielonyslon@greenelephant-
foundation.com



KAROLINA KARPIUK

Project manager



+48882161866



karolina.karpiuk@greenelephant-
foundation.com



DENIS PAASCHE

Co-trainer & logistician



+48737414083



denis.paasche@greenelephant-
foundation.com

This project has been funded with support from the European Commission.
This publication reflects the views only of the author, and the Commission cannot be held responsible for any use which may be made of the information contained therein.

